



# 2-CYLINDER CONCRETE CRUSHERS

DCC-20, DCC-25, DCC-30, DCC-40, DCC-50, DCC-65, DCC-75



In the end, the correct piece of equipment determines the success of each job

# DEMAREC 2-CYLINDER CONCRETE CRUSHERS POWER TOOLS FOR PROFESSIONALS

DEMAREC, since 2006 part of the international KINSHOFER GROUP, is one of the leading manufacturers of equipment for the demolition- and recycling industry globally. DEMAREC proves to be big in innovation... down to the smallest details with the scrap and recycling tools developed in-house!

## In the end... it's only about the tool!

The scrap and recycling tools by DEMAREC prove every day that good tools are literally and figuratively speaking more than half the battle. In fact: in the end, the correct piece of equipment determines the success and outcome of each job.

Therefore, DEMAREC advises its prospects and customers to focus on the piece of equipment and not on the machine. And... never the other way around! Thus, it is never ever necessary to surrender any capacity and as a result any (business) performance and profits.

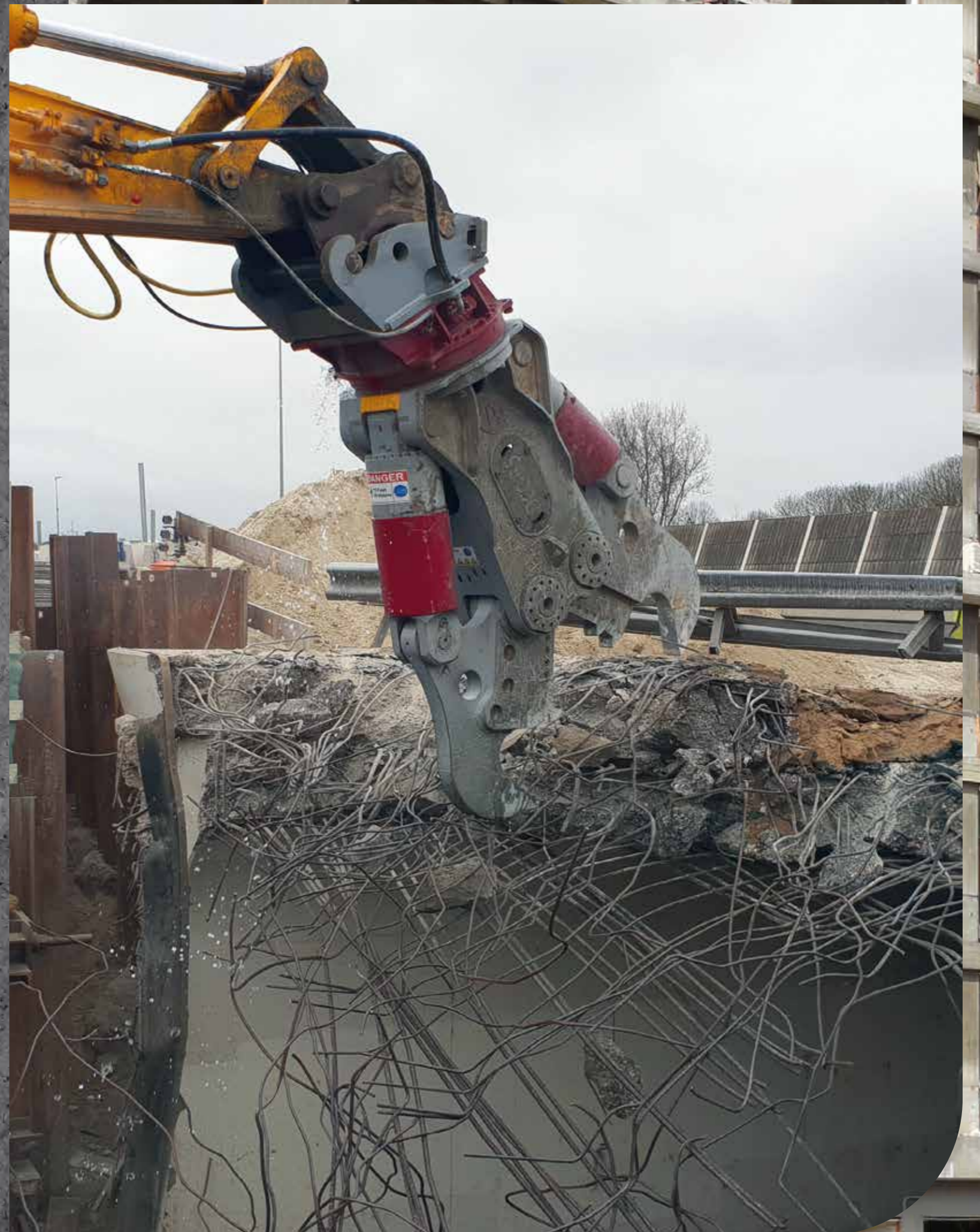
In other words, an investment in a tool by DEMAREC is much more than a sound investment that is guaranteed to repay itself 100%!

## COMBINATION OF ENGINEERING AND MARKET KNOWLEDGE

The DEMAREC DCC 2-cylinder concrete crushers have been especially developed for demolishing the thickest reinforced concrete, such as viaducts, quaysides, and heavy foundations. The DCC concrete crusher works perfectly in combination with the latest model excavators as well as specialized 'High Reach Demolition Machines'.

The shears have two pivot points, which ensures that the jaws have more torque to generate the maximum closing force. In combination with the newly developed DemaPower 2.0 cylinder and perfectly tailored jaw geometry, the DCC concrete shears produce 25% more force on average than similar shears. The DemaPower 2.0 system also ensures faster cycle times.

The hydraulic system is completely built into the frame and the cylinders are protected by very robust cylinder guards, so the hydraulics cannot be damaged during the work. A perfect jaw design ensures an optimal force closing curve so that the DCC always has enough strength until the jaw is completely closed. The DCC also has an extra-wide and deep jaw mouth.



# DCC CONCRETE CRUSHER

The DCC Demolition Concrete Crusher is based on the concept of 2 moveable jaws: Heavy duty demolition application, with extreme Force and Jaw-opening in combination with the fastest cycle times.

Far out the best in its weight class, the DCC-line is designed for this application without any compromises. Equipped with 2 pins, different type of jaws, and the powerful DemaPower 2.0 cylinders.

## Key Features and Benefits

- 25% more power and extremely fast cycle times because of DemaPower 2.0 System
- Double rotator motors or single piston motor ensure a high rotation force
- Optimal force closing curve
- Filters in rotator protect the rotation circuit
- High penetrating force for cutting
- Robust slewing ring ensures it will survive even the heaviest demolition work
- Highly durable jaws
- Optimum cylinder protection
- Hydraulic system completely protected by the yoke
- Produce 25% more power on average than similar crushers
- Patented DemaSafety Valve System to prevent overpressurisation of hydraulic cylinder - rod side



**DCC-75-A**  
Standard



**DCC-75-C**  
with exchangeable  
tips, shrouds and long  
cutting blades



**DCC-75-D**  
with exchangeable  
wear parts and standard  
cutting blades

## Technical specs Standard Concrete Crusher DCC-A Standard

Type		DCC-20-A	DCC-25-A	DCC-30-A	DCC-40-A	DCC-50-A	DCC-65-A	DCC-75-A
Carrier weight*	ton	14 - 20	18 - 25	20 - 35	25 - 45	35 - 55	50 - 70	60 - 80
Weight**	kg	1500	2000	2425	3250	4200	5300	6300
Closing force	ton	85	105	120	135	155	180	200
Jaw opening	mm	-	1000	1150	1360	1500	1600	1750
Jaw depth	mm	-	865	935	1035	1135	1235	1350
Width upper jaw	mm	-	60	70	80	90	100	100
Height	mm	-	2195	2390	2545	2845	2995	3225
Length of cutting blades	mm	-	200	250	300	300	300	400
Opening/Closing Pmax	bar	-	380	380	380	380	380	380
Flow	l/min	-	150 - 250	200 - 300	250 - 350	300 - 500	400 - 600	500 - 700
Rotation Pmax	bar	-	140	140	140	140	140	200
Flow	l/min	-	40 - 60	40 - 60	40 - 60	40 - 60	40 - 60	60
Back pressure max.	bar	-	-	-	-	-	-	10***
Cycle time Opening/Closing	sec	-	2,3 / 3,0	2,5 / 3,4	3,3 / 3,6	3,2 / 3,4	2,8 / 3,9	2,8 / 3,8

## Technical specs Concrete Crusher with exchangeable tips, shrouds and long cutting blades DCC-C

Type		DCC-20-C	DCC-25-C	DCC-30-C	DCC-40-C	DCC-50-C	DCC-65-C	DCC-75-C
Carrier weight*	ton	14 - 20	18 - 25	20 - 35	25 - 45	35 - 55	50 - 70	60 - 80
Weight**	kg	1500	2100	2465	3300	4320	5440	6300
Closing force	ton	85	105	120	135	155	180	200
Jaw opening	mm	-	1000	1150	1360	1500	1600	1700
Jaw depth	mm	-	825	900	1000	1100	1200	1250
Height	mm	-	2195	2390	2545	2845	2995	3225
Length of cutting blades	mm	-	520	520	570	650	680	700
Opening/Closing Pmax	bar	-	380	380	380	380	380	380
Flow	l/min	-	150 - 250	200 - 300	250 - 350	300 - 500	400 - 600	500 - 700
Rotation Pmax	bar	-	140	140	140	140	140	200
Flow	l/min	-	40 - 60	40 - 60	40 - 60	40 - 60	40 - 60	60
Back pressure max.	bar	-	-	-	-	-	-	10***
Cycle time Opening/Closing	sec	-	2,3 / 3,0	2,5 / 3,4	3,3 / 3,6	3,2 / 3,4	2,8 / 3,9	2,8 / 3,8

## Technical specs Concrete Crusher with exchangeable wear parts and standard cutting blades DCC-D

Type		DCC-20-D	DCC-25-D	DCC-30-D	DCC-40-D	DCC-50-D	DCC-65-D	DCC-75-D
Carrier weight*	ton	14 - 20	18 - 25	20 - 35	25 - 45	35 - 55	50 - 70	60 - 80
Weight**	kg	1500	2000	2425	3250	4200	5300	6300
Closing force	ton	85	105	120	135	155	180	200
Jaw opening	mm	-	980	1125	1355	1490	1565	1710
Jaw depth	mm	-	825	900	1000	1100	1200	1300
Height	mm	-	2195	2390	2545	2845	2995	3225
Length of cutting blades	mm	-	200	250	300	300	300	400
Opening/Closing Pmax	bar	-	380	380	380	380	380	380
Flow	l/min	-	150 - 250	200 - 300	250 - 350	300 - 500	400 - 600	500 - 700
Rotation Pmax	bar	-	140	140	140	140	140	200
Flow	l/min	-	40 - 60	40 - 60	40 - 60	40 - 60	40 - 60	60
Back pressure max.	bar	-	-	-	-	-	-	10***
Cycle time Opening/Closing	sec	-	2,3 / 3,0	2,5 / 3,4	3,3 / 3,6	3,2 / 3,4	2,8 / 3,9	2,8 / 3,8

\*Depending on lifting capacity of carrier \*\*Weight excluding bracket \*\*\*Drain line required

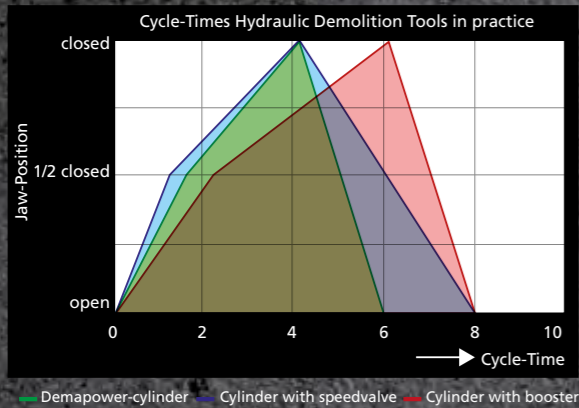
Subject to change without notice.

## Key Features and Benefits

- 1 Very strong & stable housing design, made of high strength steel.
- 2 DemaFilter-System in rotation circuit.
- 3 New Rotator head design: New swivel with single & double connections, HD-slewing ring (double roles for all types)
- 4 - New Hydraulic valve system with high flow capacity.  
- The central speed valve is also the oil-distributor for the 2 cylinders.

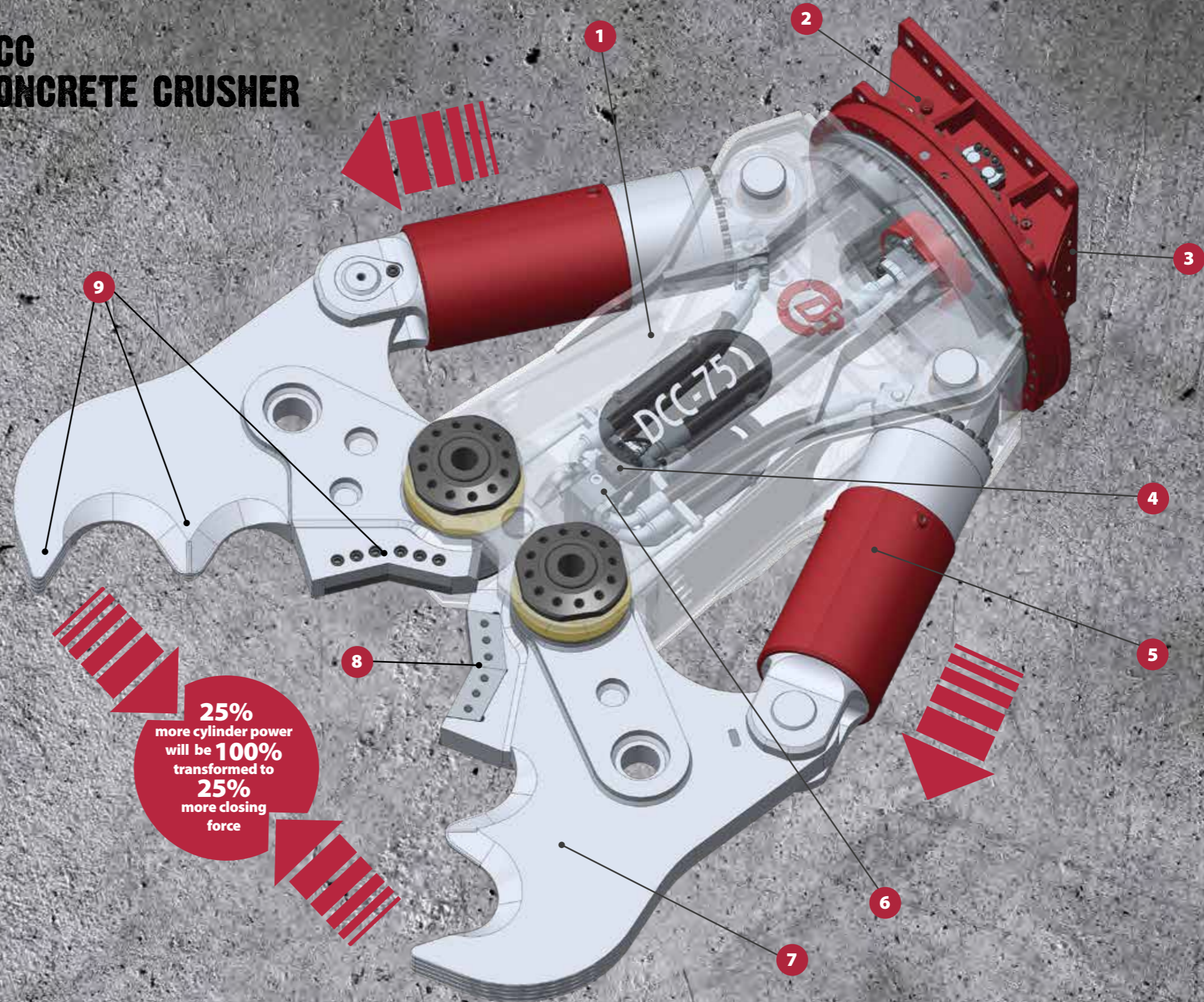


- 5
  - Concept is based on 4 cylinder chambers, 2 way oil regeneration (open & close) and high cylinder forces.
  - Results in a smooth but fast, strong and very efficient operation of a crusher or shear.
  - The new developed speedvalve-system of the DCC crushers works in two directions; opening and closing.
  - Based on logic elements with 420 bar working pressure.
  - Maximum operating pressure of 380 bars is optimal for the hydraulic system of a modern excavator.
  - The high cylinder force is immediately available, no losing time for pumping up the pressure (like a booster system).



- 6 Patented safety system to prevent overpressurisation of hydraulic cylinder - rod side.
- 7 Wedge-style jaw, for the best penetration performances. Jaw is made of high strength & wear resistance steel.
- 8 2 cutting blades for DCC-25 – DCC-40  
4 cutting blades for DCC- 50 – DCC-75
- 9 DCC-65-C and DCC-75-C with exchangeable piercing tip and long cutting knives (4x).

# DCC CONCRETE CRUSHER



**25% more cylinder power will be 100% transformed to 25% more closing force**



DemaFilter-System in rotation circuit



Double acting speed valve for excellent cycle times

**THE "SECRET" BEHIND THE POWER OF THE DCC; DEMAPOWER 2.0**

**"as a result of DemaPower 2.0 System DCC Concrete Crushers achieves a performance to crushers one to two sizes larger"**

# FROM PASSION TO PERFORMANCE



## **Demolition and Recycling Equipment B.V.**

De Hork 32

5431 NS Cuijk

The Netherlands

☎ +31 (0)485 442300

info@demarec.com

**Dealer:**