

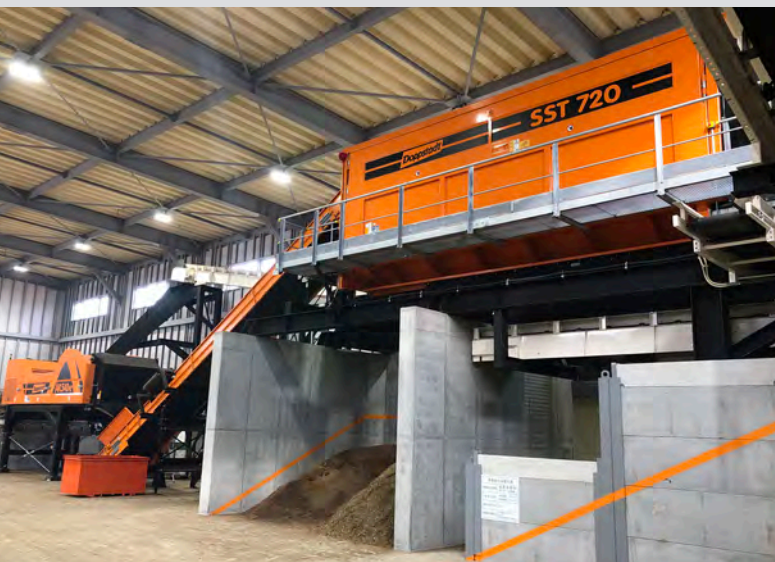
SST 720

TECHNICAL DATA



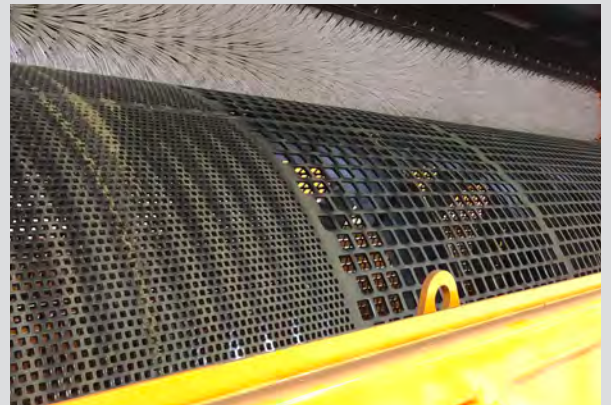
| | |
|------------------------|--|
| Weight | 13.000 kg |
| Length (basic machine) | 9.280 mm |
| Width (basic machine) | 2.650 mm |
| Height (basic machine) | 3.390 mm |
| Motor type | Spur gear motor |
| Rated power | 22 kW / 30 PS |
| Torque | 2.300 Nm |
| Screen drum | |
| Diameter | 2.000 mm |
| Length | 7.000 mm |
| Mesh size | selectable |
| Mesh shape | selectable (round- and/or squared mesh size, wire mesh size) |
| Material thickness | selectable |
| Rotational speed | 8 - 20 rpm |
| Screen area | 38,8 m ² |

The technical data are approximate and depends on the machine equipment (subject to change without notice).



Applications

With the screening machines of the SM and SST series it is possible to screen waste and raw materials such as compost, soil, green waste, biowaste, waste wood, root wood, household waste, commercial waste, mixed construction waste, plastics, glass, paper, sand, gravel, scrap, slag, and other recyclable materials.



All advantages at a glance

- Simple and robust technology
- Flexible results through tailored drums (punched plate, mesh wire, changeable plates)
- Quick drum change
- Maximum throughput
- Almost maintenance-free
- Multiple sieve sections possible
- More than thousand times proven